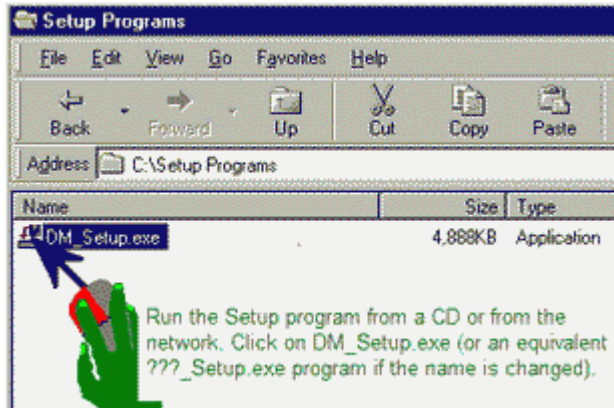


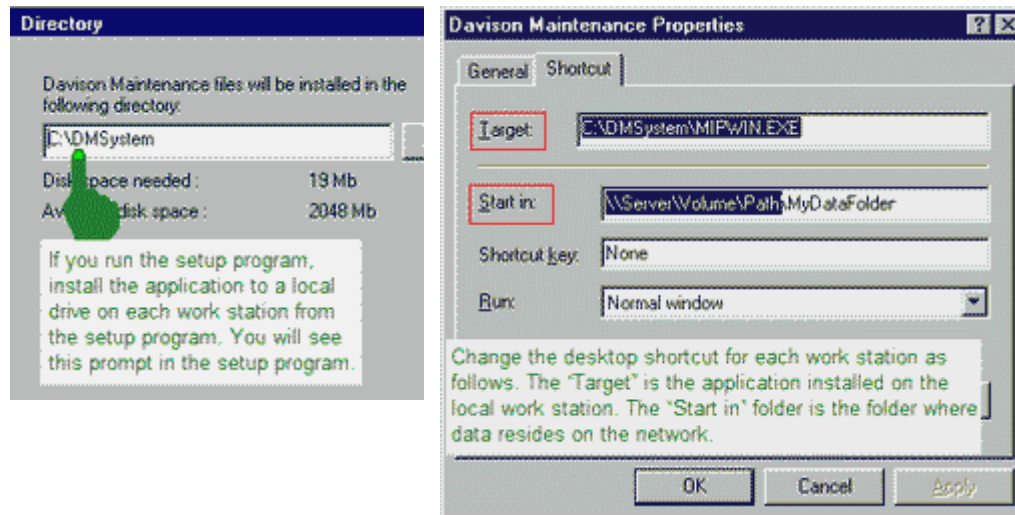
Installing to every Work Station

If the application is unreasonably slow starting from a network, install the application to every work station. Data is still accessed from the network by each work station. This will significantly reduce the time required to start the application. Now application files will start and run from the work station, reducing network traffic.

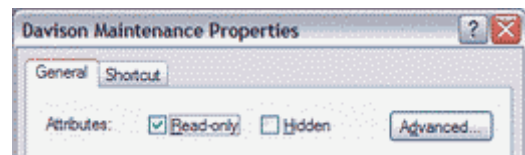
Keep work stations updated with the latest version. Now instead of updating only one copy, all copies on every work station must be updated with the latest version.



Option: If the application is already installed on the network, you can copy all files from the application folder (`\\server\volume\DMSystem` or your equivalent) to each work station (`C:\DMSystem` or your equivalent). Do **not** copy the data folder (`...DMSystem\DATA`) to the local work station.



When upgrading, the shortcut could be overwritten. Save the shortcut with "Read-only" attributes so that upgrades will not overwrite this shortcut. You may prefer to rename this shortcut to prevent overwriting by the next upgrade.



NOTE: The license file must be copied to the network data folder. This allows all work stations to authorize from the network. The license file for the CMMS is MipWin.LF, and for PredictMate is DSPdM.LF.