

Typical Shortcut for Networks

This example shows a typical desktop shortcut for calling the application. Enter "Target" and "Start in" as shown using Universal Naming Convention (UNC). A folder named "Menu" is provided within the folder for program files, which contains shortcuts created during the installation. The shortcuts in the "Menu" folder could be copied to a network menu.

You can install both program and data files on the server.

In the shortcut, enter "Target" and "Start in" using Universal Naming Convention (UNC).

The "Start in" or "Working" folder is the folder where data resides.

For example: Target: \\Server\Volume\Path\Dmsystem\MipWin.exe

Start In: \\Server\Volume\Path\Dmsystem\DATA

Save the shortcut with "Read-only" attributes so that upgrades will not overwrite this shortcut.

Copy the files MipWin.LF and DsPdM.LF to the "Start In" folder.

Only the "Computer Number" shown for the network is needed to unlock the program for every client work station.

If the network is slow, or if a client work station is remotely located and slow:

1) Install the program files at the local client work station.

2) In the local shortcut, the "Target" is "C:\DmSystem\MipWin.exe" for Davison Maintenance CMMS or "C:\DmSystem\DsPdM.exe" for PredictMate.

3) When the network program is updated with a new version, remember to update the program files at the local client work station.

See [Installing to every Work Station](#)

Folder for data files

The "Start in" or "Working" folder is the folder where **data** resides, not where the program files reside.

In shortcut properties:

Change the "Start In" folder to where data resides. For example:

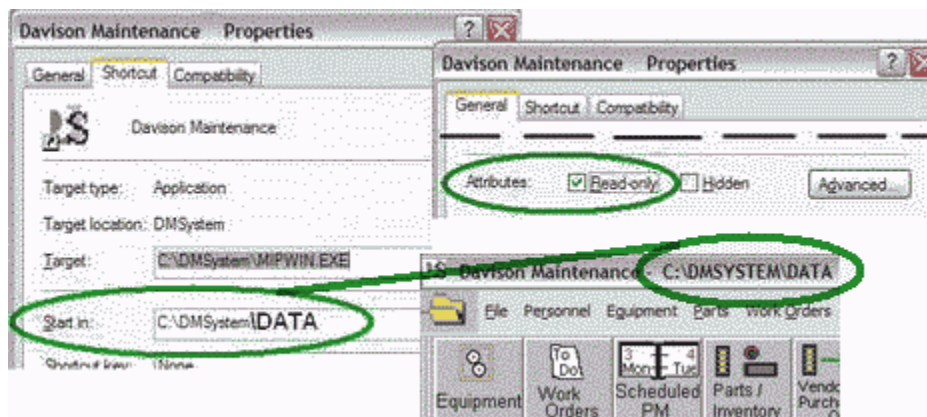
Target or program folder:

\\Server\Volume\Path\DmSystem\MipWin.exe

Start In or data folder:

\\Server\Volume\Path\DmSystem\DATA

Change only the shortcut Attributes to Read-only.



The "Start In" folder is also displayed in the title bar as shown.