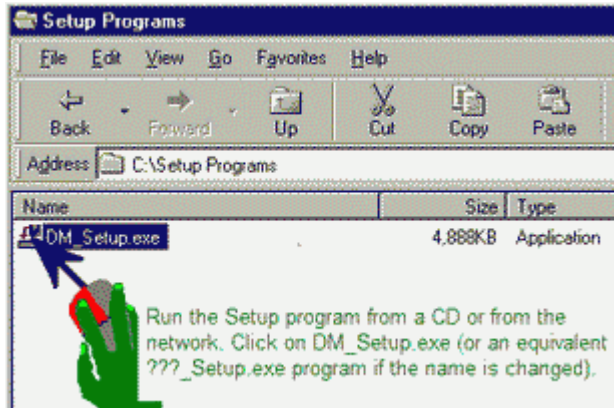


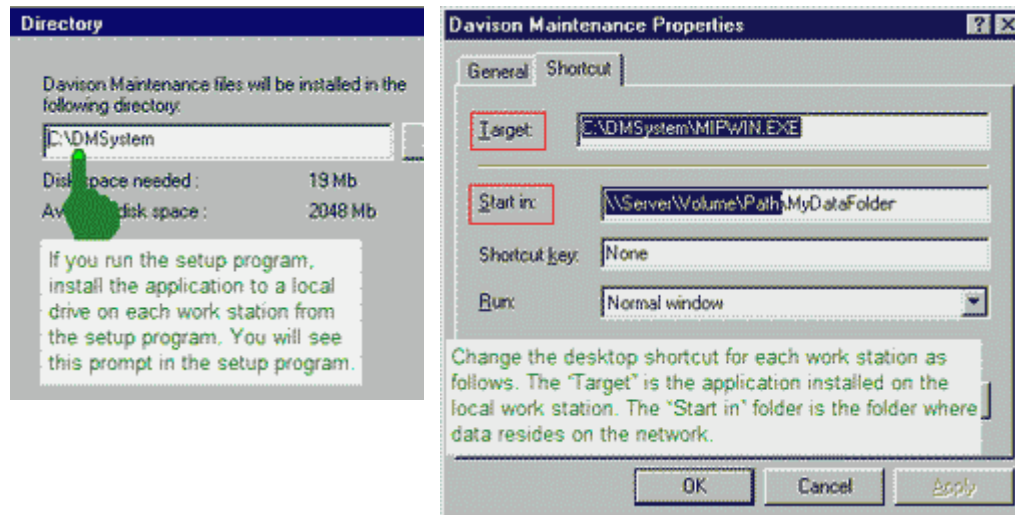
Installing to every Work Station

If the application is unreasonably slow starting from a network, install the application to every work station. Data is still accessed from the network by each work station. This will significantly reduce the time required to start the application. Now application files will start and run from the work station, reducing network traffic.

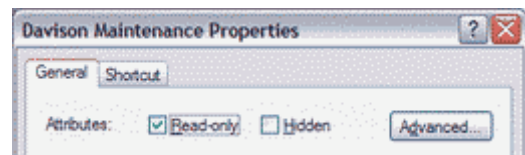
Keep work stations updated with the latest version. Now instead of updating only one copy, all copies on every work station must be updated with the latest version.



Option: If the application is already installed on the network, you can copy all files from the application folder (`\\server\volume\DMSsystem` or your equivalent) to each work station (`C:\DMSsystem` or your equivalent). Do **not** copy the data folder (`...DMSsystem\DATA`) to the local work station.



When upgrading, the shortcut could be overwritten. Save the shortcut with "Read-only" attributes so that upgrades will not overwrite this shortcut. You may prefer to rename this shortcut to prevent overwriting by the next upgrade.



NOTE: The license file must be copied to the network data folder. This allows all work stations to authorize from the network. The license file for the CMMS is MipWin.LF, and for PredictMate is DSPdM.LF.

Alternative Setup.exe for networks and upgrades

We also distribute a program DM_SetupProgram.exe. This does NOT install a shortcut, and it does NOT install a license file (.LF). In this case, Davison Software usually creates a program to install your data folder on the network – InstallData???.exe. The program DM_SetupProgram.exe installs to a separate folder or to each workstation. Later versions of DM_SetupProgram.exe install without affecting shortcuts or license files.