

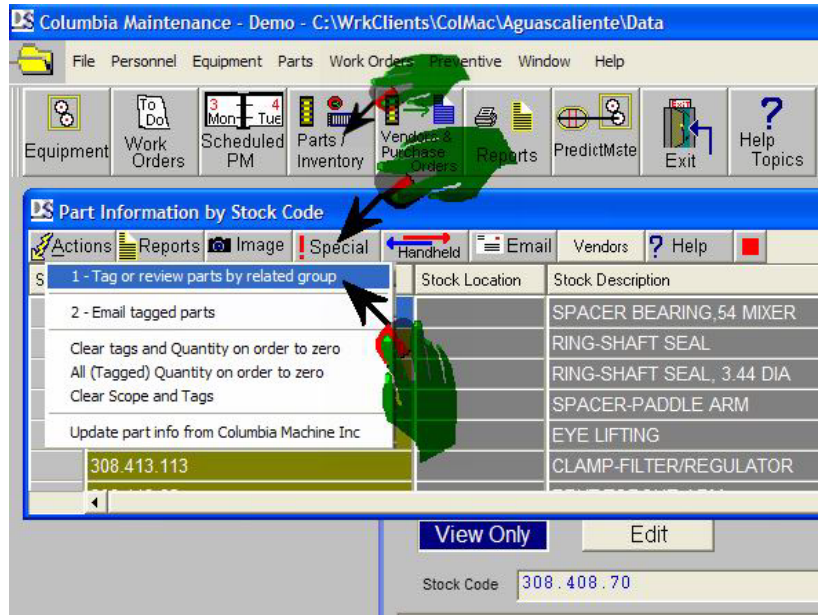
Ordering Parts from a tree-view of Sub-Assemblies

Select:

- Parts
- Special
- 1 - Tag or review parts....

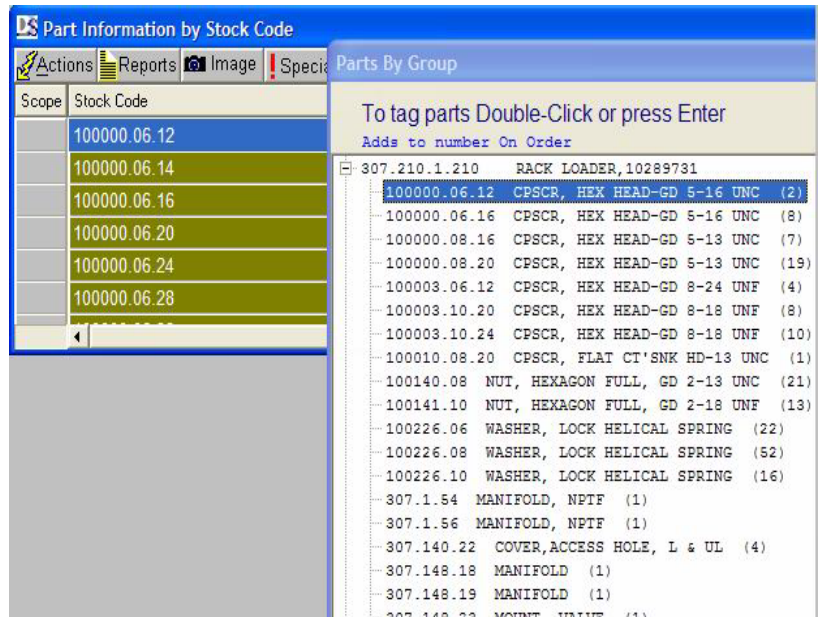
A tree-view of Assemblies with their sub-assemblies will display.

CMMS Part Groups are usually equivalent to a Sub-Assembly. But from the tree view you can select any combination of parts from Assemblies and Sub-Assemblies.



How to navigate this tree view:

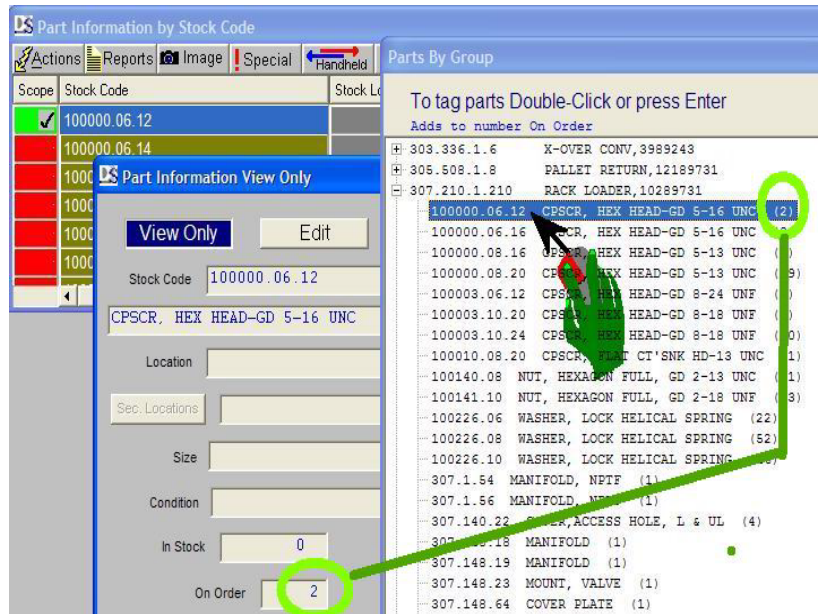
- Click on a part:
The part browser moves to the part.
- Double-click or Enter on a single part:
Tags the part and increases the number "On Order".
- Double-click or Enter on an Assembly:
Tags all the parts in that assembly **AND** all the parts in related sub-assemblies.



Double-click to tag a part, and to increase the number "On Order".

The number on order is increased by the number indicated in the tree-view of Parts by Group.

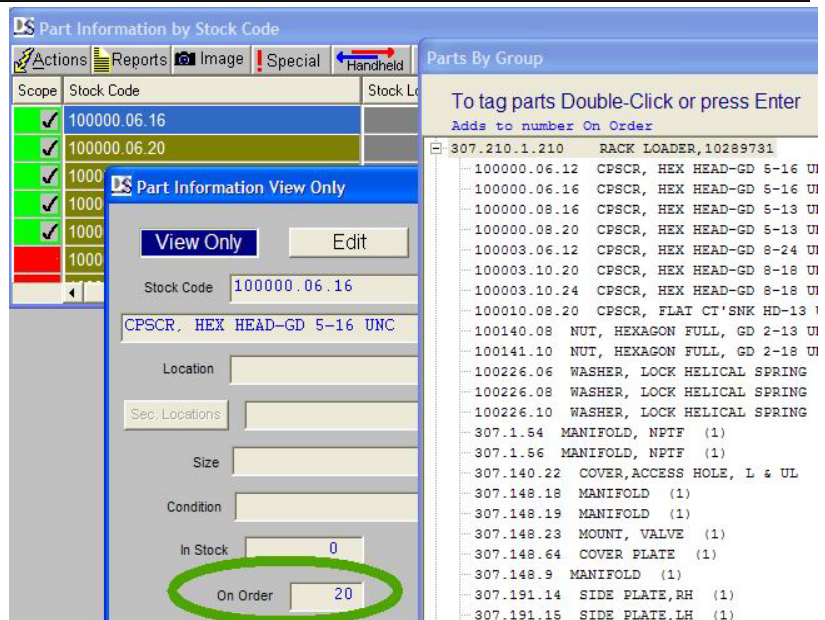
If you double-click on an Assembly, it adds all the parts in that assembly **AND** all the parts in related sub-assemblies.



In this example we clicked on the assembly:

"307.210.1.210 RACK LOADER ..."

All the parts associated to this assembly were tagged and the number "On Order" was increased.

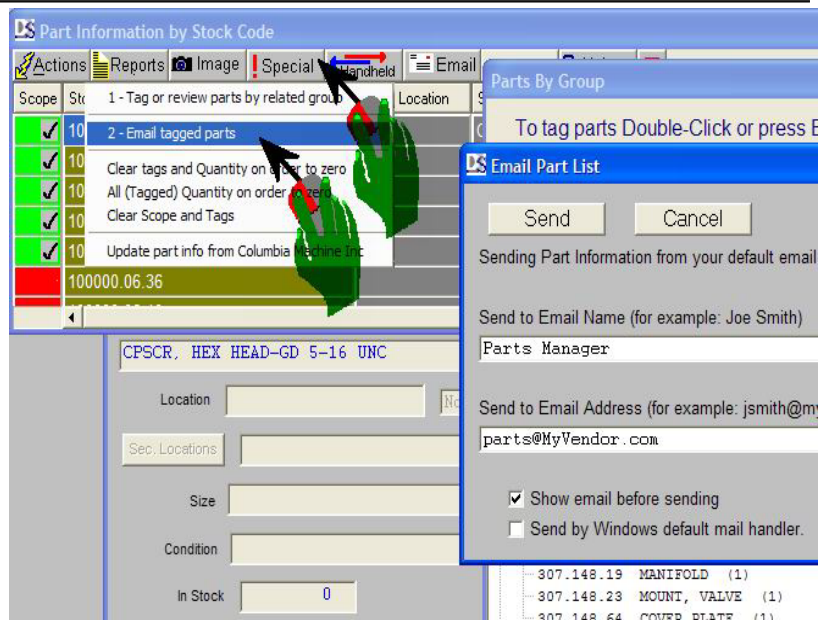


Select "2 - Email tagged parts".

An email is created with a list of the tagged parts attached in a text file.

Example list of parts needed:

Stock Code / Stock Description / Inventory on site / Ordered
100000.06.12 CPSCR, ... 0 14
100000.06.16 CPSCR, ... 0 20
100000.08.16 CPSCR, ... 0 8
100000.08.20 CPSCR, ... 0 19



Instead of emailing a list, you can also print a report of the tagged parts for a list of Assemblies and all sub-assemblies in a single list.

The "Parts by Group" tree view is also a good place to just review the relation between Assemblies and sub-assemblies.

Part Information

Stock Code	Stock Description	Location	Quantity in stock	Quantity on order	Reorder Limit	Reorder Margin	L	D
100000.06.12	CPSCR, HEX HEAD-GD 5-16 UNC			26				
100000.06.16	CPSCR, HEX HEAD-GD 5-16 UNC			36				
100000.08.16	CPSCR, HEX HEAD-GD 5-13 UNC							
100000.08.20	CPSCR, HEX HEAD-GD 5-13 UNC							
100003.06.12	CPSCR, HEX HEAD-GD 8-24 UNF							
100003.10.20	CPSCR, HEX HEAD-GD 8-18 UNF							
100003.10.24	CPSCR, HEX HEAD-GD 8-18 UNF							

