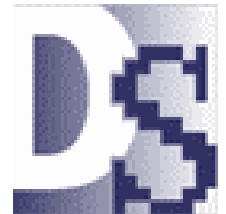


Predictive Maintenance (PdM)

Continuous PdM with Training

PredictMate^(tm)

www.DavisonSoftware.com



Prevent break-downs

Save costs

You can check vibration at least monthly.

Do not wait for vibration testing only once per year.

Take predictive readings before problems begin.

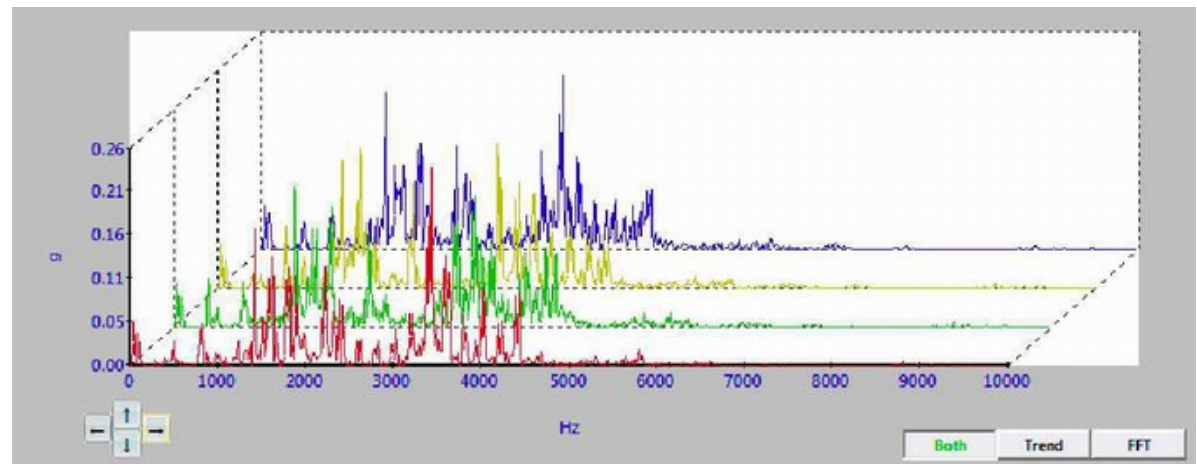
Take regular vibration readings

Upload vibration readings to a computer.



Vibration analysis and trending in VibTrend™

Test Products International
www.testproductsintl.com



Matching with machines on the meter

The screenshot shows a software application with a menu bar (File, Equipment, Personnel, Work Orders, Tools, Window, Help) and a toolbar (Equipment, Work Orders, Reports, Exit, Help). A context menu is open over the 'Exit' button, listing actions: Show/Refresh VibTrend names, Put this Position Code to VibTrend name, Add VibTrend name to Positions, and About VibTrend Names. Below the menu is a table titled 'VibTrend Position Names by Upper(sVMName + MachName)' with columns: Scope, Replaced, VibMeter Na..., Long Name, and Machine Name. The table contains two rows of data.

Scope	Replaced	VibMeter Na...	Long Name	Machine Name
N	1A	Motor Driven End - Axial	...	Exhaust Fan
N	1H	Motor Driver End - Horizontal	...	Exhaust Fan

Create an exact match of equipment codes and long names between VibTrend (tm) and PredictMate and CMMS with a special utility.

Look for problems in any predictive value.

Schedule and trend values in PredictMate™ software.

Look for problems in values like temperature, cycles, or power.

The screenshot displays the PredictMate software interface. The main window, titled "Equipment by Location + Unit", shows a table of equipment with columns for Scope, Out, Location, Route, Unit Code, Unit Description, Location Description, Equip. Group, Priority, Change, and Interval. The table contains several rows, with one row highlighted in blue: F01, 2302, BLW01, AIR WASH BLOWER (BACKWASH BLOWER) - DEM..., Filter Building, AWB, and 0. An "Equipment Readings BLW01" window is open in the foreground, showing a table of readings for the selected equipment. The readings table has columns for Scope, Personnel ID, Date, Time, Position, Type, and Reading. The data in the readings table is as follows:

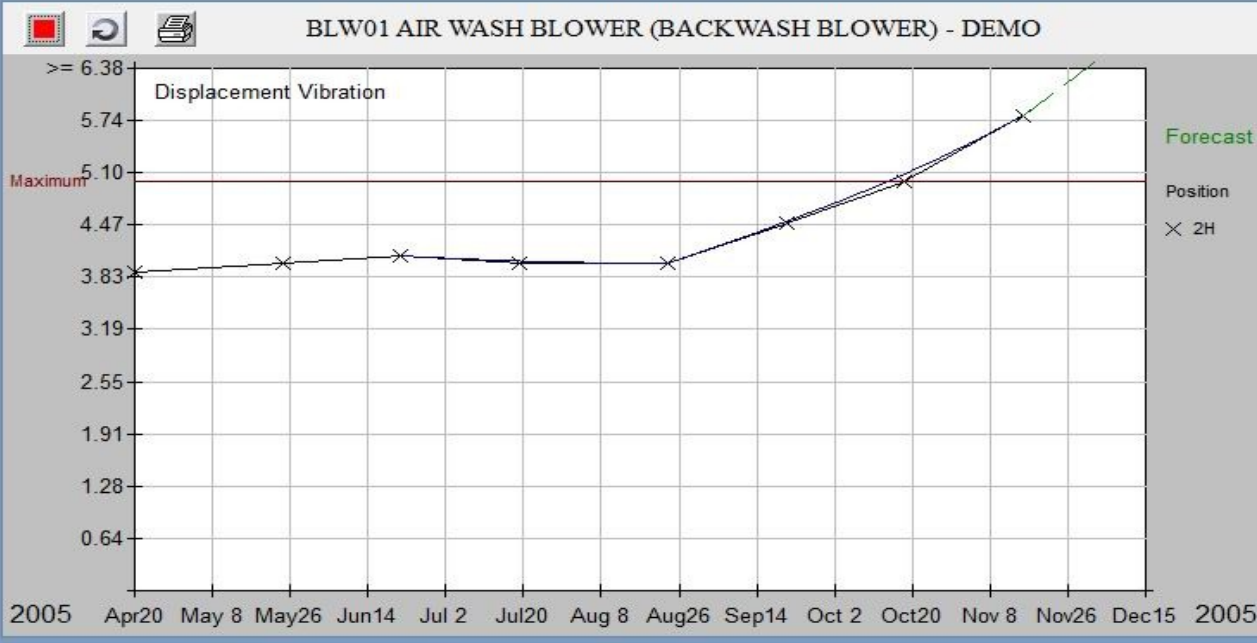
Scope	Personnel ID	Date	Time	Position	Type	Reading
		11/16/2005	:		AV01 Alarm (1=Alarm 0=No Alarm) ...	565.0000
		11/16/2005	:		CFM Cubic Feet per Minute air flow (...)	1150.0000
		11/16/2005	:		SP01 Speed	1050.0000
		11/16/2005	:		TEMP Temperature	99.5000
		11/16/2005	:		TOT1 Hours, Total	5500.0000
		11/16/2005	:	1H	D Displacement Vibration	4.9000

Forecast problems from trends

Equipment Alarms Sorted by Location + Unit

Unit	Location	Filter Building	Route			
BLW01	F01	Filter Building	2302			
AIR WASH BLOWER (BACKWASH BLOWER) - DEMO						
Date	Time	Position	Type	Maximum	Minimum	Reading
16-Nov-2005		(No Personnel ID)				
<i>Forecast Maximum 12/7/2005</i>						
			Cubic Feet per Minute air flow (Mini		1300.0000	1150.0000
			Temperature	104.0165		99.5000
		2H	Displacement Vibration	5.0000		5.8000
		2H	Velocity Vibration	0.3500		0.4400
				5.0000		6.1000
				0.3500		0.6100

Trend Analysis



Manage work orders for predicted problems.



Work Order List to file for any CMMS.

WO_NUM	PRIORITY	STATUS	EQ_CODE	COMP_CODE	DA_REQUEST	...
0000000004	2	R	BLW01	5/25/2006	...	
0000000005	2	R	BBB02	6/1/2006	...	
0000000006	3	R	FAN01 MOTOR	

Predictive Readings

Reading: More

Equip: PMP01

Pump 1

Position: 1H

Type: V

Velocity Vibration Reading: .22

1	2	3	Back Space
4	5	6	
7	8	9	0



Equipment Readings Due

Equipment Readings Due on 11/25/2009 Default interval 28 Days
Sorted by Location + Unit

Unit	F01	Filter Building	Route
BLW01			2302
AIR WASH BLOWER (BACKWASH BLOWER) - DEMO			
Position	Type	Last reading by (No Personnel ID)	10/16/2009
New reading by			
		Time-weighted average from SCADA	565.0000
		Cubic Feet per Minute air flow (Minimum)	1150.0000
1H	Velocity Vibration		0.3000
2H	Displacement Vibration		5.1000
2H	Velocity Vibration		0.4400

Equipment

Work Orders

Reports



Work Orders in PredictMate.
No duplicates.

PredictMate

Work Orders

Actions Reports Image Plan Handheld

Scope	Work Order	Status	Priority	Location
	0000001575	Ready/...	2-Urgent	MDF
	0000001212	Ready/...	3-Normal	WDE

Predictive Maintenance (PdM) Continuous PdM with Training

Read predictive values.

Trend and Analyze values.

Manage work orders to fix problems.



Wilcox Consulting, Inc.
Madeira Beach, FL USA

Davison Systems, LLC
Gresham, Oregon USA
www.DavisonSoftware.com

