

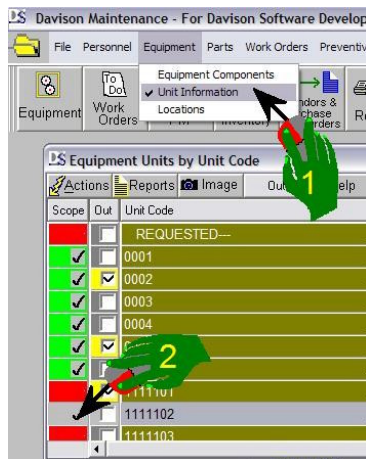
Transferring data between remote systems or data folders

You can transfer Equipment or Parts/Inventory data between two remote systems or between two data folders. Two utility programs are required - GetAppRc.DLL and AddAppRc.DLL. These programs were created for internal use by Davison Software and by clients who deal with transfer of similar equipment or parts between remote systems.

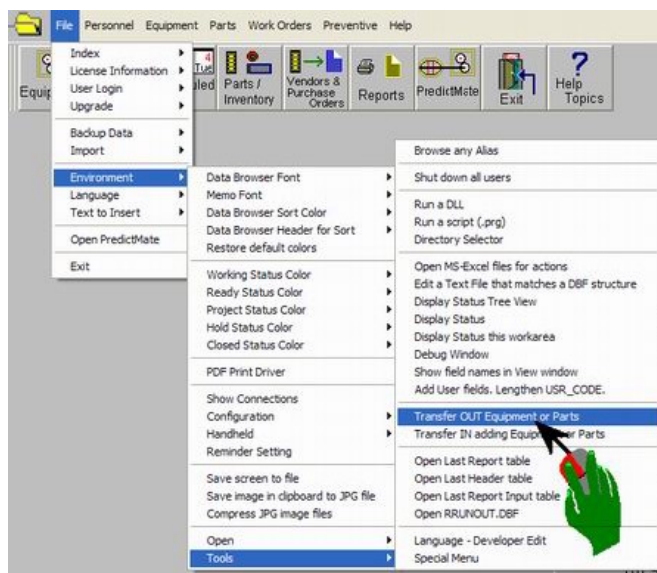
In some cases Davison Software will send a program that adds data without the following procedure. A program, named like "AddAppRecs_2010-02-24.exe" runs to add data to the target folder.

Extracting from the source (original) folder

This procedure shows how to get Equipment data. To extract Parts/Inventory, follow the same procedure, except begin by opening Part Information.



- 1) Open Equipment Units
- 2) Tag or set a scope on the equipment to be transferred.



Select "File, Environment, Tools, **Transfer OUT ...**" as shown in the picture.

This will export data to tables, named "A_?????.dbf" in the application folder (C:\DmSystem or equivalent). This has no effect on the current data. It just creates the "A_..." tables.

You can view these tables by closing the Equipment Unit window and any other windows, then select "Transfer OUT" again. You will be prompted to select these tables.

Importing to the target folder

If the target folder is on the same network or drive, you do not need to move the files named "A_...". But if the target data is a remote system, you will need to copy the files named "A_..." to the remote system program folder (C:\DmSystem or equivalent).

You can change the files named "A_..." before importing, but be careful that your changes agree with program rules. For example, an equipment unit code (field EQ_CODE) in A_Mnt_Equip.DBF must exist in the primary table A_Mnt_Unit.DBF.

After importing data it is good to check all validations. Open each data window and run "Actions, Validate" (or Shift-F3, Validate). This checks that the data is agreed with program rules.

Procedure

- 1) The files named "A_..." should exist in the program folder (C:\DmSystem or equivalent).
- 2) Open Davison Maintenance CMMS. If you have opened any data windows, close all data windows.
- 3 Select "File, Environment, Tools, **Transfer IN ...**".
- 4) The program will add the new records. You can run this repeatedly and new records will not be duplicated. The program checks if the records from the files named "A_..." already exist, according to unique key values, like unit code or part number. If a record exists in the target folder, the record from the "A_..." file is not added.
- 5) You can now open Equipment or Parts and check for the new records. We recommend running "Actions, Validate" in Equipment and Parts/Inventory.

What is transferred

Equipment Units (only tagged records)

From Units, related:

Locations

NOT- Out of service

Equipment Components

PM Groups

Preventive Maintenance (PM) Tasks

Crafts

Part Groups - MNTPTGRP

Vendor Information

NOT- Work Orders

Work Order Priorities

Cause Codes

Crafts, Personnel in crafts

Actual Hours worked

Part Groups

Part Inventory Information (only tagged records)

Part Groups for each stock

Stock to Vendor cross-reference

Vendor Information

Part (Stock) Locations

NOT - Predictive Information related to Units

Default limits for predictive maintenance

Equipment Unit Groups

Images for equipment readings

Predictive reading types

Limits for an equipment reading

Equipment Readings

Comments for Equipment Readings

Data marked "NOT" transferred may be transferred in a future upgrade of this utility.

When validating PM Tasks, de-select Personnel ID. Personnel ID's are not transferred, since ID's are expected to be different in another system or data folder.